

Mushroom Antenna Installation Guide



Proprietary and Confidential
Copyright © 2011 Pointer Telocation
Version 2.0
Revised and Updated: July 17, 2011





Mushroom Antenna Installation Guide



Legal Notices

IMPORTANT

1. All legal terms and safety and operating instructions should be read thoroughly before the product accompanying this document is installed and operated.
2. This document should be retained for future reference.
3. Attachments, accessories or peripheral devices not supplied or recommended in writing by Pointer Telocation Ltd. may be hazardous and/or may cause damage to the product and should not, in any circumstances, be used or combined with the product.

General

The product accompanying this document is not designated for and should not be used in life support appliances, devices, machines or other systems of any sort where any malfunction of the product can reasonably be expected to result in injury or death. Customers of Pointer Telocation Ltd. using, integrating, and/or selling the product for use in such applications do so at their own risk and agree to fully indemnify Pointer Telocation Ltd. for any resulting loss or damages.

Warranty Exceptions and Disclaimers

Pointer Telocation Ltd. shall bear no responsibility and shall have no obligation under the foregoing limited warranty for any damages resulting from normal wear and tear, the cost of obtaining substitute products, or any defect that is (i) discovered by purchaser during the warranty period but purchaser does not notify Pointer Telocation Ltd. until after the end of the warranty period, (ii) caused by any accident, force majeure, misuse, abuse, handling or testing, improper installation or unauthorized repair or modification of the product, (iii) caused by use of any software not supplied by Pointer Telocation Ltd., or by use of the product other than in accordance with its documentation, or (iv) the result of electrostatic discharge, electrical surge, fire, flood or similar causes. Unless otherwise provided in a written agreement between the purchaser and Pointer Telocation Ltd., the purchaser shall be solely responsible for the proper configuration, testing and verification of the product prior to deployment in the field.

POINTER TELOCATION LTD.'S SOLE RESPONSIBILITY AND PURCHASER'S SOLE REMEDY UNDER THIS LIMITED WARRANTY SHALL BE TO REPAIR OR REPLACE THE PRODUCT HARDWARE, SOFTWARE OR SOFTWARE MEDIA (OR IF REPAIR OR REPLACEMENT IS NOT POSSIBLE, OBTAIN A REFUND OF THE PURCHASE PRICE) AS PROVIDED ABOVE. POINTER TELOCATION LTD. EXPRESSLY DISCLAIMS ALL OTHER WARRANTIES OF ANY KIND, EXPRESS OR IMPLIED, INCLUDING WITHOUT LIMITATION ANY IMPLIED WARRANTIES OF NON-INFRINGEMENT, MERCHANTABILITY, SATISFACTORY PERFORMANCE AND FITNESS FOR A PARTICULAR PURPOSE. IN NO EVENT SHALL POINTER TELOCATION LTD. BE LIABLE FOR ANY INDIRECT, SPECIAL, EXEMPLARY, INCIDENTAL OR CONSEQUENTIAL DAMAGES (INCLUDING WITHOUT LIMITATION LOSS OR INTERRUPTION OF USE, DATA, REVENUES OR PROFITS) RESULTING FROM A BREACH OF THIS WARRANTY OR BASED ON ANY OTHER LEGAL THEORY, EVEN IF POINTER TELOCATION LTD. HAS BEEN ADVISED OF THE POSSIBILITY OR LIKELIHOOD OF SUCH DAMAGES.



Mushroom Antenna Installation Guide



Intellectual Property

Copyright in and to this document is owned solely by Pointer Telocation Ltd. Nothing in this document shall be construed as granting you any license to any intellectual property rights subsisting in or related to the subject matter of this document including, without limitation, patents, patent applications, trademarks, copyrights or other intellectual property rights, all of which remain the sole property of Pointer Telocation Ltd. Subject to applicable copyright law, no part of this document may be reproduced, stored in or introduced into a retrieval system, or transmitted in any form or by any means (electronic, mechanical, photocopying, recording or otherwise), or for any purpose, without the express written permission of Pointer Telocation Ltd.

© Copyright 2011. All rights reserved.



Mushroom Antenna Installation Guide



Table of Contents

1	Introduction	5
1.1	Abbreviations	5
1.2	References	5
1.3	Revision History	5
2	Installation Instructions	6



Mushroom Antenna Installation Guide



1 Introduction

This guide provides all necessary information for a technician who is involved in the installation of a Mushroom antenna. It describes how to install and verify the proper functioning of the antenna.

1.1 Abbreviations

Abbreviation	Description

1.2 References

#	Reference	Description
	Compact Fleet and Compact CAN Installation Guide	Provides all necessary information for technicians who are involved in the installation of Compact Fleet and Compact CAN systems.

1.3 Revision History

Version	Date	Description
1.0	14 October 2010	Initial version.
2.0	17 July 2011	Technical writer editing and creation of standalone guide.

2 Installation Instructions

This section describes how to install the Mushroom antenna and how to connect it to your GSM unit.

➤ **To install the Mushroom antenna:**

1. Before proceeding with the installation, make sure you have all the required components, including the gasket, the screw that will fasten the antenna to its location, and the antenna itself.



Figure 1: Required components

2. Prepare the area for installation. The hole you need to drill should be 16.5mm in diameter.

NOTE: The surface where you drill the holes cannot be more than 15mm thick.

3. Place the gasket on top of the surface, and then place the mushroom antenna on top of the gasket. The following image shows the antenna's wires below the surface.



Figure 2: Antenna wires below the surface

4. Fasten the bolt to the antenna below the surface, as shown in the following two images.



Figure 3: Fastening the bolt to the antenna



Figure 4: Fastening the bolt to the antenna

5. Connect the mushroom antenna to your GSM unit, as shown in the image below.

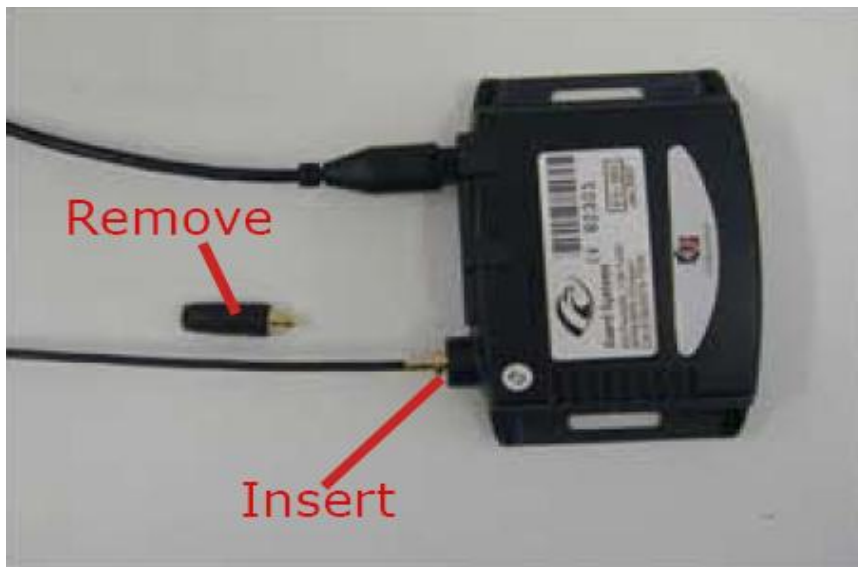


Figure 5: Connecting the antenna to your GSM unit